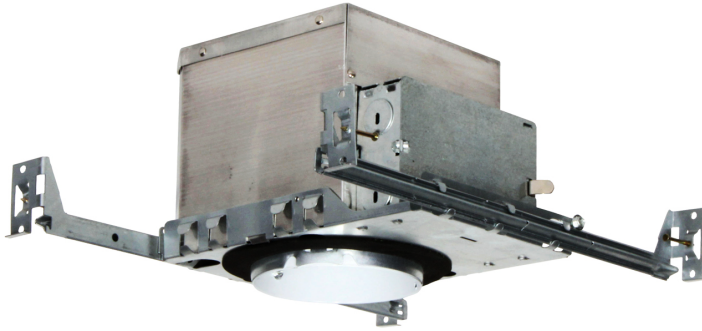
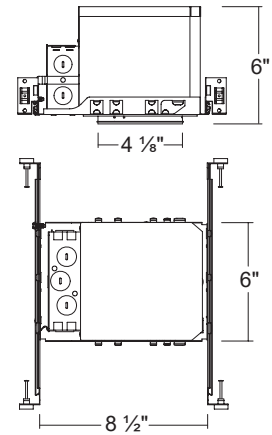


H400ICA

4" IC Air-Tight Incandescent Double-Wall New construction Housing (Max. 50W)



Dimensions



ORDERING INFORMATION

Model No.	Description
H400ICA	4" IC Air-Tight Incandescent Double-Wall New construction Housing (Max. 50W)

SPECIFICATION

Plaster Frame

- Galvanized steel construction. The housing can be removed from plaster frame to provide access to the junction box

Junction Box

- Listed for through branch circuit wiring
- Contains seven 7/8" knockouts and four Romex pryouts with strain relief

Bar Hanger

- Pre-installed Real nail easily installs in regular lumber, engineered lumber
- Bar Hangers are adjustable from 13-5/8" to 25" and can be repositioned 90 degree on plaster frame

Thermal Protector

- Self resetting thermal protector deactivates fixture if overheating occurs due to improper lamping or misapplied insulation.

Lamps

- R/Par 20, JDR16, Max 50W.
- Use JDR16 Lamp with 4" Low voltage trims

Listings

- cULus Listed for Damp Location
- cULus Listed for Feed Through
- Certified under ASTM-E283 for Air tight construction

COMPATIBLE TRIMS

T400 Smooth



• Incandescent
50W R / Par20

T403 Stepped Baffle



• Incandescent
50W R / Par20

T404 Wall Wash



• Incandescent
50W R / Par20

T405 Eyeball



• Incandescent
50W R / Par20

T411 Surface Gimbal



• Incandescent
50W R / Par20

T407 Slot Aperature



• Incandescent
50W R / Par20

T418 Frosted Shower



• Incandescent
50W R / Par20

T409 Fresnel Shower



• Incandescent
50W R / Par20

T408 Albalite Shower



• Incandescent
50W R / Par20

T413 AT Cone Stepped Baffle



• Incandescent
50W R / Par20

T410 Drop Opal



• Incandescent
50W R / Par20

T445 Square Gimbal



• Incandescent
50W R / Par20

